



Official
VISITOR
GUIDE

The Jewellery Quarter

BIRMINGHAM

www.jewelleryquarter.net



Welcome

Situated on the edge of Birmingham's bustling city centre sits an urban village that's thriving with energy and steeped in history.

Home to a community of independent makers, a flourishing food and drink scene and a heritage that attracts visitors from far and wide; the Jewellery Quarter has established itself as a global destination.

Take a wander around our historical streets, and discover a unique community of designers, makers and independent retailers. Experience the inspiring energy and vibrancy that will keep you coming back for more.

“a
National
Treasure”

ENGLISH HERITAGE

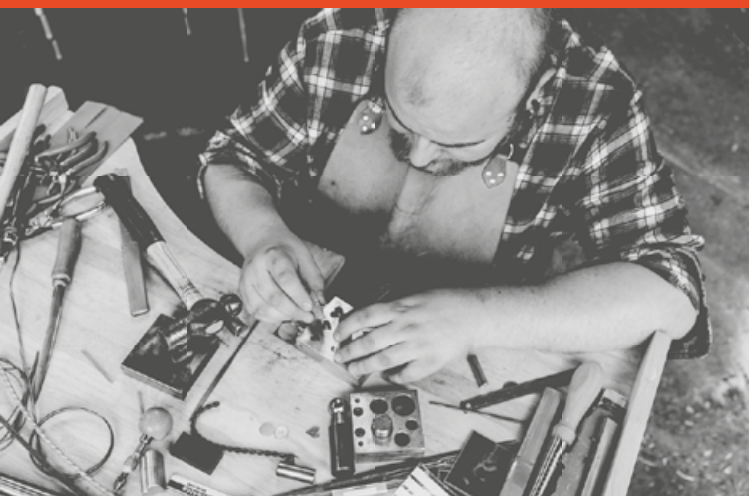
History of the JQ

Birmingham's Jewellery Quarter contains Europe's largest concentration of manufacturing jewellers, producing more than 40% of the UK jewellery output. Goldsmiths and silversmiths have been working in the area for more than 200 years, with the School of Jewellery founded in 1890.

For most of its history the Jewellery Quarter was a closed community. There were no jewellery shops until the late 1970s when the economic recession prompted some of the manufacturers to start opening their doors to retail customers. Soon, other retailers moved into the area and in the 1980s old buildings started to be restored rather than pulled down.

Today, the area has undergone further regeneration and many of the former factory buildings have been taken over by a mix of independent businesses and creative workshops or turned into quirky residential apartments.

The Jewellery Quarter has one of the highest concentrations of listed buildings in the UK, at over 200 listed buildings in 1km squared. The area has been described by English Heritage as a "national treasure".





Learn & Explore

The Jewellery Quarter is steeped in a rich history and is a true wonder to explore.

Meander through the Quarter's historic streets, by walking the **JQ Heritage Trail** and by visiting many of the Quarter's notable attractions, including the catacombs at **Warstone Lane Cemetery**, as well as the **Coffin Works** and **Pen Museums**. Download the JQ Heritage Trail by visiting: jewelleryquarter.net

Step back in time and experience what working life was like in this industrial area of Birmingham by visiting the internationally renowned **Museum of the Jewellery Quarter** or by taking a peek inside **J.W.Evans Silver Factory** to see one of the most complete surviving factories in Birmingham.

You can also learn the art of jewellery making and take part in a variety of craft classes and hands-on workshops run by local businesses and makers from across the Quarter.

What's On

The Jewellery Quarter has a busy programme of events throughout the year.

The Jewellery Quarter Festival arrives in the Quarter every Summer, showcasing the area's energy, diversity and heritage with free entertainment for all the family.

Twice a year, **JQ Open Studios**, the Quarter's local makers, open their workshop doors to the public offering free demonstrations and workshops that include the art of jewellery, needle craft, leather making and much more.

Each year, the festive season kicks off with a spectacular **Christmas Lights Switch On** in November. With music, fireworks and street food, this free event is the perfect way to get into the festive spirit.

And with the many bars, restaurants and independent businesses running their own calendar of events, this bustling urban village will keep you entertained all year round.

To ensure you get the most out of your trip to the Jewellery Quarter and to not miss out on any local events, head over to our website to see the full list:

jewelleryquarter.net/whats-on



Top 10 TO SEE & DO



01

Visit Birmingham's last remaining Georgian Square

Adorned with a flurry of restaurants and bars, St. Paul's Square is one of the most iconic areas in the second city and is home to the stunning St. Paul's Church, dating back to 1779.



02

Visit three museums with the Explorer Pass

Combine your visits to the world renowned Museum of the Jewellery Quarter, the Pen Museum and Newman Brothers at the Coffin Works and get up to 15% off.



03

Go chocolate tasting

Showcasing the Quarter's thriving independent retail scene, take part in a gourmet chocolate tasting experience in one of Birmingham's independent chocolatiers – The Chocolate Quarter.



04

Attend the JQ Festival

The flagship event in the Jewellery Quarter's calendar is the annual JQ Festival, attracting an average of 15,000 visits each year. Expect free family entertainment that showcases the Quarter's vibrant energy and long-lasting heritage.

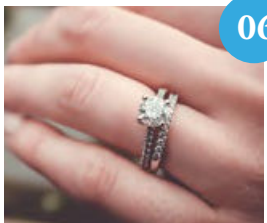




05

Drink in the world's 'best gin bar'

Sitting on the edge of the stunning St. Paul's Square, explore over 140 gins in an intimate and exclusive setting with just 24 seats. Booking is highly recommended on your visit to the award-winning 40 St. Paul's.



06

Browse through the jewellery

Admire the hundreds of jewellery shops that give the Quarter its namesake. Whether it's an engagement ring, an anniversary present, or a gift for yourself, explore some of the best jewellery made within the UK.



07

Go fine dining

From Indian, to Nordic-inspired modern British cuisine, a visit to the Jewellery Quarter isn't complete until you've eaten at one of the many restaurants in the Quarter mentioned in this year's Michelin guide.



08

Take part in the JQ Ale Trail

With over 20 pubs and bars to choose from, the Jewellery Quarter Ale Trail is the perfect excuse to explore the Quarter's streets, tasting a variety of different ales, some of which are brewed within the area.



09

Attend a jewellery making workshop

Learn how to make or look after your jewellery with an array of courses and workshops. Learn traditional hand skills, jewellery design and all the basics of professional jewellery making.



10

Walk the JQ Heritage Trail

Explore the Jewellery Quarter by embarking on the JQ Heritage Trail, a self-guided tour of 18 venues that showcase the fascinating story of the Quarter's past and present.

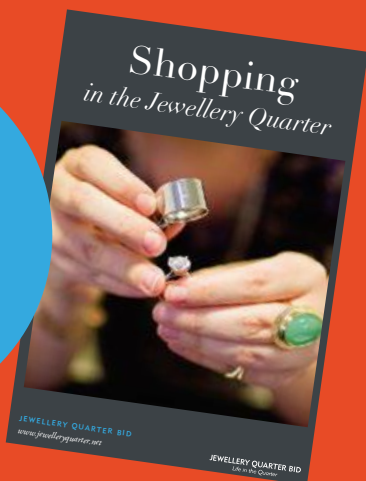
Browse & Buy

The Quarter contains Europe's largest concentration of manufacturing jewellers, between them producing more than 40% of UK jewellery output. Combining the very best of traditional craftsmanship with innovative designs and high-quality materials, they create beautifully crafted custom jewellery.

Bespoke gifts can be commissioned on site with huge savings on high street prices – whether you're looking for the perfect ring for a proposal or beautiful earrings to celebrate a special occasion.

As well as our many jewellers, the Quarter is also home to over 150 independent specialist retailers and craftspeople. Here you'll find drink merchants, florists, chocolatiers, barbers, hair & beauty salons, art galleries, tattoo parlours, wedding shops, home furnishings and much more. Giving you a unique, independent shopping experience, just moments from Birmingham city centre.

**Download our
JQ Shopping Guide
for a full list of
retailers by visiting:
jewelleryquarter.net**

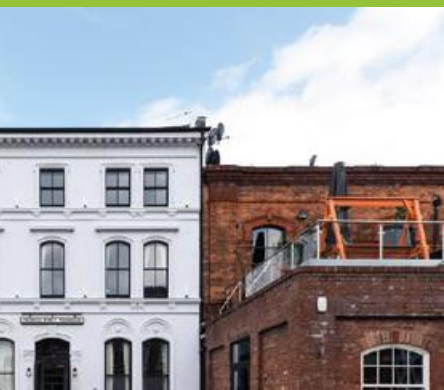




Eat, Drink...

The Jewellery Quarter is home to an eclectic mix of swanky bars, micro-breweries and traditional pubs. Whether it's sipping margaritas on **The Button Factory's** rooftop terrace, or tasting gin in **40 St. Paul's**, the world's best gin bar, the Quarter can offer a nightlife that's a refreshing alternative to the busy city centre.

The Quarter is also home to a plethora of cafes and restaurants with food from all over the world, from mouth-watering street food at **Indian Brewery** through to fine dining experiences at **Andersons**, **Folium** or Michelin starred **Opheem**. And with a range of cuisines and prices, there is sure to be something for everyone to enjoy.





...& Relax...

When the evening is over, recharge at one of our many boutique hotels, including **Frederick Street Townhouse**, **Saint Paul's House** or **Bloc Hotel**. We're also home to many well-known budget hotels including **Travelodge** and **Ibis** as well as **Stay City Hotel**, **Hampton by Hilton** and **Selina Birmingham**.

Getting here

You can visit the Jewellery Quarter by train, tram, bus and car.

The Jewellery Quarter train station is situated on Vyse Street. Trains run approximately every 10 minutes from major towns and cities including Stratford Upon Avon, Kidderminster and London, with all services passing through Birmingham Moor Street and Birmingham Snow Hill stations.

The Jewellery Quarter also has two dedicated tram stops with services running from Birmingham Grand Central through to Wolverhampton, up to every 6 minutes. With a £1.50 city hop you can arrive at the Jewellery Quarter from central Birmingham in just 7 minutes.

The Jewellery Quarter is also accessible via a number of bus routes, including the 8A, 8C, 101, 16 and 74 buses.

If you're travelling by car, the Quarter is well signposted from Birmingham City Centre and hosts several car parks throughout the area, as well as on-street parking.



**2 TRAM
STOPS**



**CAR
PARKS**



**FAST
TRAINS**



**REGULAR
BUSES**

20 MIN WALK



Or why not walk or cycle, the JQ is minutes away from the city centre, and can be reached via scenic canal footpaths, or inspiring city streets.

Explore the Quarter



Railway Stations



Metro Stations



Car Parks
On-street parking is also available



Attractions, Galleries
& Museums



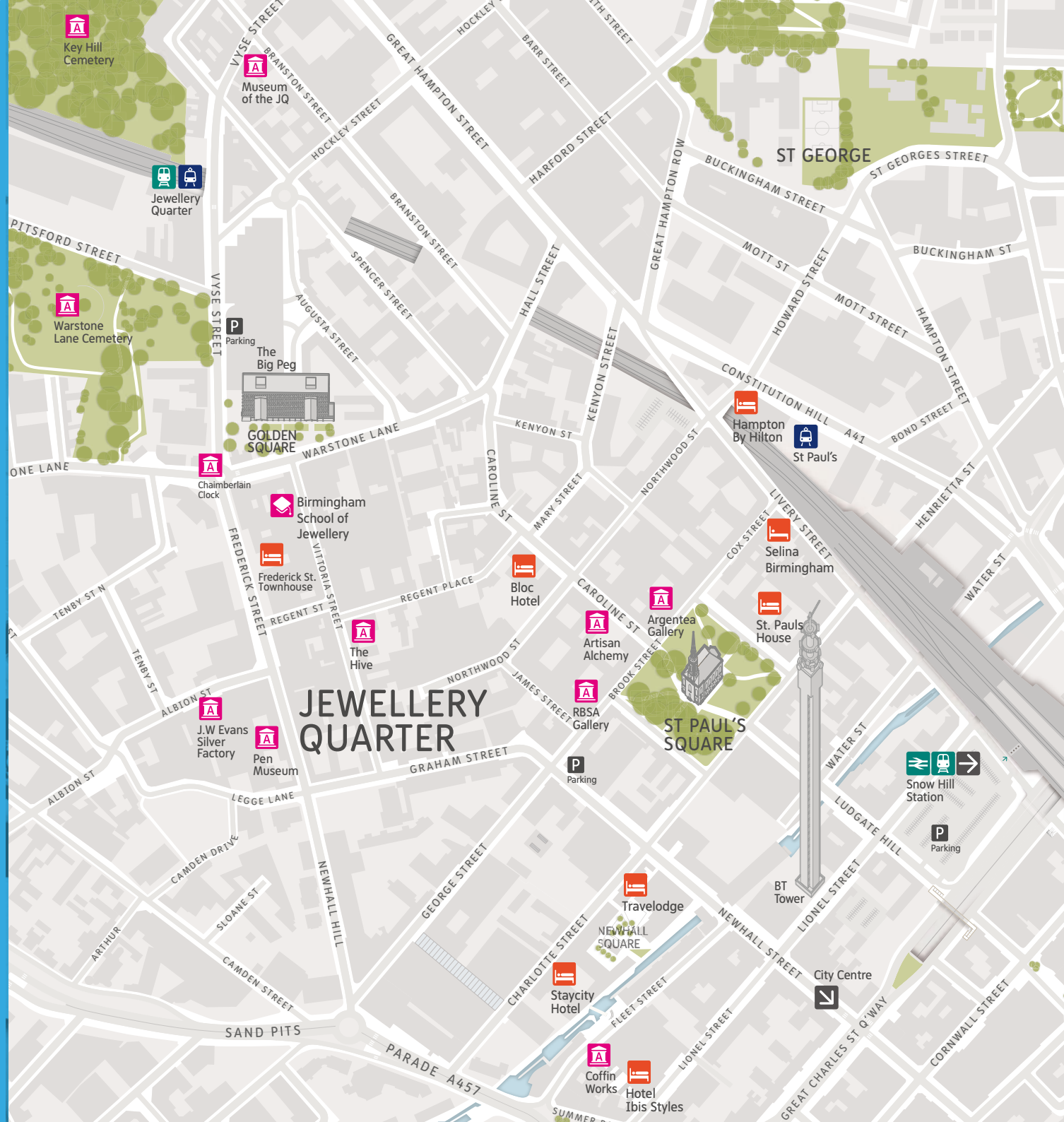
Hotels, Hostels
& Apartments

You'll also discover a host of bars, cafés and restaurants to suit every budget and taste. Alongside a host of independent retailers and shops.

For full listings of local businesses and opening times visit:

www.jewelleryquarter.net

[f /JewelleryQtr](https://www.facebook.com/JewelleryQtr) [@JQBID](https://twitter.com/JQBID) [@jq_bid](https://www.instagram.com/jq_bid)





JEWELLERY QUARTER

BUSINESS IMPROVEMENT DISTRICT

For up to date details about the many events, browse the full business directory or download any of the Quarter's literature (Heritage Trail, Shopping Guide, Ale Trail and Food & Drink Guide) please visit **www.jewelleryquarter.net**

This guide is produced and distributed by the Jewellery Quarter Business Improvement District (JQBID). The JQBID is funded by the local businesses. It provides a welcoming and safe environment for visitors, keeps the streets clean and safe and invests in projects to improve the local area. For more information, please visit www.jewelleryquarter.net/jqbid or contact us via **info@jqdt.org** or **0121 233 2814**.

